

# SKIN CARE

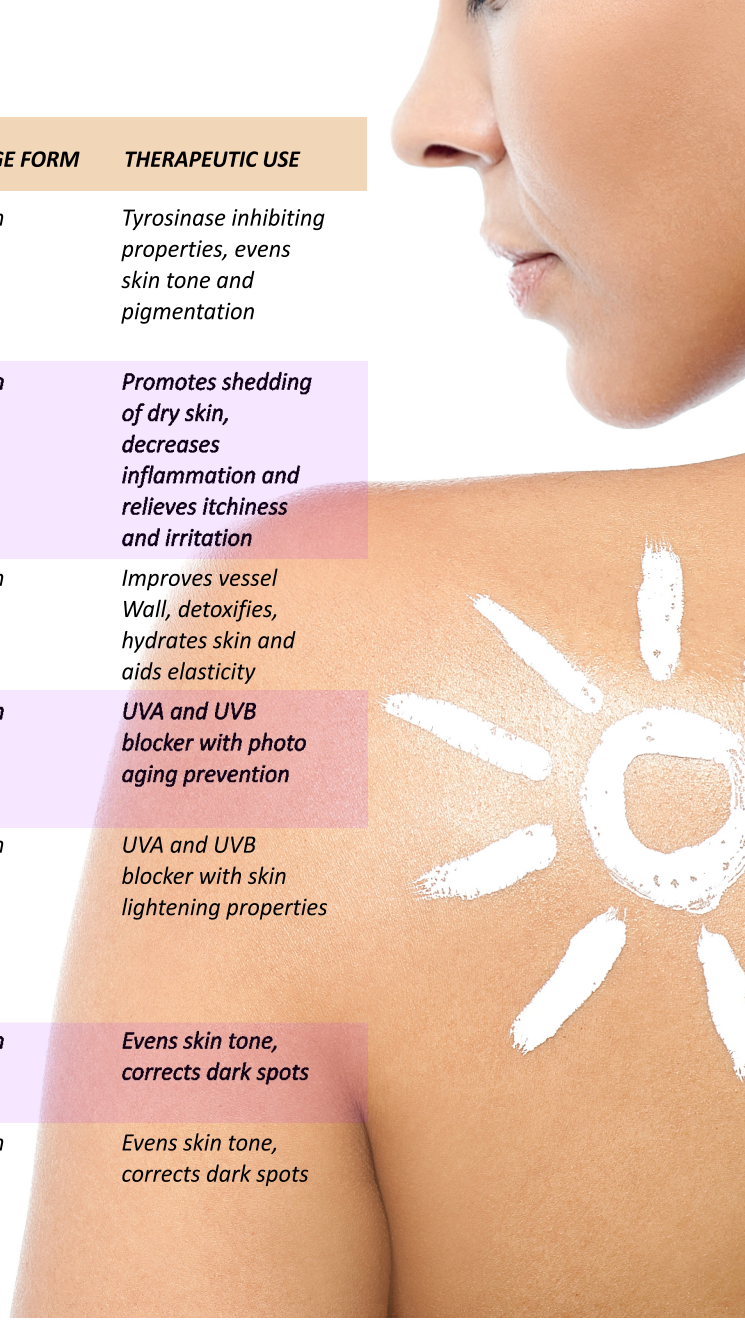
SEGMENT	PRODUCT	COMBINATION	DOSAGE FORM	THERAPEUTIC USE
ACNE	Acne Wash	Tea Tree Oil and Proprietary blend of Anaha Lifecare which includes Salicylic Acid, Wild Turmeric	Facewash	Antibacterial and soothing facewash
	Acne Creamé	SkinSave* and Proprietary blend of Anaha Lifecare which includes sulfur and Aloe Vera	Cream Lotion	Soothes and calms abraded skin conditions due to its anti-inflammation and anti-bacterial properties
	Acne Derm	A blend of Green Tea, Willow Bark Extract with Proprietary blend of Anaha Lifecare	Cream Lotion	Inhibits excess Sebum production, acts as anti-inflammatory agent and soothes abraded skin
ANTI-AGING	Age Pro Natura	Phytoplankton, Rose Myrtle extract, Opuntia Biocomplex* with Proprietary blend of Anaha Lifecare	Cream Lotion	DNA repair, wound healing and elasticity improving properties
	CollAge - N	A blend of Vitamin E, Natural Retinol, Peptides and Proprietary blend of Anaha Lifecare which includes Glycolic Acid, Olea-HT*	Cream Lotion Serum	Preserves Collagen, lightens spots and triggers new cell generation
	Wrinko Heal	Silk Protein Peptide and proprietary blend of Anaha Lifecare which includes Opuntia Biocomplex* and Coenzyme Q10	Cream Gel	Heals puffiness and fine lines





<b>SEGMENT</b>	<b>PRODUCT</b>	<b>COMBINATION</b>	<b>DOSAGE FORM</b>	<b>THERAPEUTIC USE</b>
<b>STRETCH MARKS</b>	<i>XstreTch</i>	<i>Caffeine, Centella Asiatica, Bladderwack Extract</i>	<i>Cream</i>	<i>Wound healing, fat degradation and metabolism supporting activities</i>
	<i>Stretch Go</i>	<i>Combination of FlavoSlim* and Retinol</i>	<i>Cream</i>	<i>Supports Cell regeneration, fat degradation and collagen reserve</i>
<b>DRY SKIN</b>	<i>Hydra Glow</i>	<i>A Proprietary Blend of Opuntia Biocomplex *, Coconut Water and Aloe Vera</i>	<i>Cream Lotion</i>	<i>Hydrates dry skin, provides anti-bacterial activity and prevents excess water loss from the skin</i>
<b>DARK CIRCLE</b>	<i>iDefence</i>	<i>Caffeine, Chamomile and Pure Almond extract</i>	<i>Gel Serum</i>	<i>Lightens skin tone, decreases puffiness and fine line, acts as vasoconstrictor</i>
<b>ECZEMA</b>	<i>Eczem Cure</i>	<i>Pumpkin Seed oil, Neem Oil and Proprietary blend of Anaha Lifecare which includes Curcuma Longa, Vitamin E</i>	<i>Lotion</i>	<i>Promotes skin regeneration, acts as lubricant and has anti-inflammatory activity</i>
<b>SKIN LIGHTENING/ HYPER PIGMENTATION</b>	<i>Glowlixir</i>	<i>SkinMoon*, Tetrahydrocurcumin and Proprietary blend of Anaha Lifecare which includes Licorice extract, Kojic Acid</i>	<i>Cream</i>	<i>Tyrosinase Inhibiting</i>

SEGMENT	PRODUCT	COMBINATION	DOSAGE FORM	THERAPEUTIC USE
<b>MELASMA</b>	<i>Skin Glow Pro</i>	<i>Activated Charcoal and Proprietary Blend of Anaha Lifecare which includes Natural Retinoids, Tetrahydrocurcumin</i>	<i>Cream</i>	<i>Tyrosinase inhibiting properties, evens skin tone and pigmentation</i>
<b>PSORIASIS</b>	<i>Psor Nil</i>	<i>SkinSave*, AKBBA from Boswellia serrata Extract and Proprietary blend of Anaha Lifecare which includes Aloe Vera</i>	<i>Cream</i>	<i>Promotes shedding of dry skin, decreases inflammation and relieves itchiness and irritation</i>
<b>ROSACEA</b>	<i>RosaCleaN</i>	<i>Blend of Green Tea, Horse Chestnut and Aloe Vera</i>	<i>Cream Gel</i>	<i>Improves vessel Wall, detoxifies, hydrates skin and aids elasticity</i>
<b>SUNSCREEN</b>	<i>SunFight Broad</i>	<i>A combination of Olea-HT*, Titanium Dioxide, Zinc Oxide and Proprietary blend of Anaha Lifecare</i>	<i>Cream</i>	<i>UVA and UVB blocker with photo aging prevention</i>
	<i>SunFight Pro</i>	<i>Added benefit of Licorice, Titanium Dioxide, Zinc Oxide and Proprietary blend of Anaha Lifecare which includes Tetrahydrocurcumin</i>	<i>Cream</i>	<i>UVA and UVB blocker with skin lightening properties</i>
<b>SPOT CORRECTOR</b>	<i>Spot Correct Natura</i>	<i>Boswellia Serrata, Centella Asiatica, Tetrahydrocurcumin</i>	<i>Cream</i>	<i>Evens skin tone, corrects dark spots</i>
	<i>Spot Correct Boost</i>	<i>Olea-HT* and Proprietary Blend of Anaha Lifecare</i>	<i>Cream</i>	<i>Evens skin tone, corrects dark spots</i>



<b>SEGMENT</b>	<b>PRODUCT</b>	<b>COMBINATION</b>	<b>DOSAGE FORM</b>	<b>THERAPEUTIC USE</b>
<b>VARICOSE VEINS</b>	Vari Vanish	Horse Chestnut and Proprietary Blend of Anaha Lifecare	Cream	Improves blood circulation, reduces swelling and water retention
<b>DEAD SKIN / BLACK AND WHITE HEAD REMOVER</b>	Exfo Clean	Orange Peel, Oatmeal and ReneGrape*	Cream Mousse	Cleans skin, removes blackheads whiteheads and dead skin
<b>CLEANSING</b>	Cleanso Wash	Aloe Vera, Probitics and Proprietary blend of Anaha Lifecare with Tea Tree oil, Lemon Extract	Facewash	Cleanses without drying
<b>NIGHT CREAM</b>	Reju Night	Black Cumin Seed, Calendula Oil and Proprietary Blend of Anaha Lifecare which includes Shea Butter, Opuntia Biocomplex*	Serum Lotion Cream	Rejuvenates skin, heals and soothers
<b>WOMEN HYGEINE WASH</b>	Fem Wash	MucoSave* with cocktail of Sea Buckthorn, Probitics and Proprietary Blend of Anaha Lifecare	Foam Mousse Liquid	pH friendly cleanser
<b>LIP LIGHTENING</b>	Lip Light	Lactic Acid, Cocoa Butter, Mulberry Extract and Proprietary Blend of Anaha Lifecare which includes Vitamin E and Honey	Glide on stick Balm Pots	Lightens dark lips and pigmentation, exfoliates, moisturizes and brings back the pinkish tinge of lips
<b>FOOT CARE CREAM WITH SCRUB</b>	Heels Cure	Opuntia BioComplex* and Proprietary Blend of Anaha Lifecare which includes Coconut Milk and active beadlets	Cream	Exfoliates, removes dead skin and moisturizes skin

